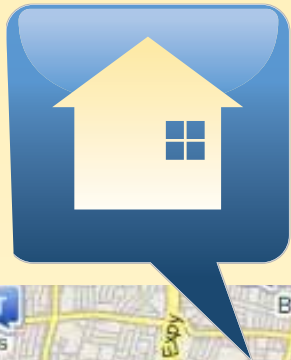


SHARE CRIME INFORMATION TODAY



CrimeReports



www.crimereports.com

CrimeReports

Enter location:

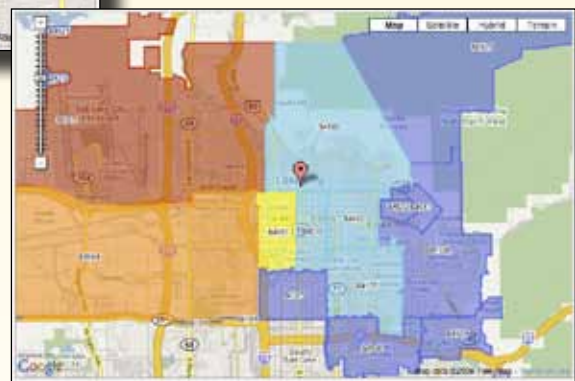
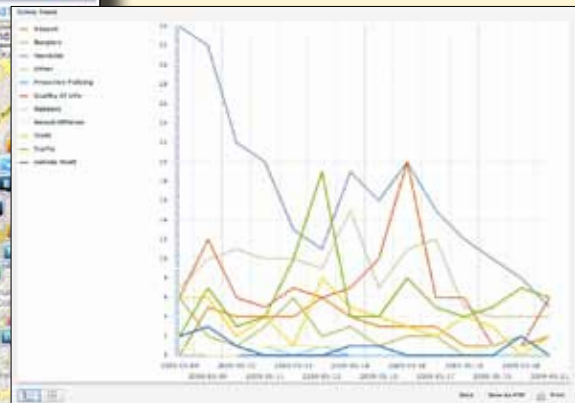
Examples: "385 Coleman Avenue, San Jose CA", "San Jose, CA", "95110"

Sort by: Crime | Date | Distance | Period (days): 3 | 7 | 14 | 30 | Calendar | Crime Types | Area

View: Crimes | Currently viewing incidents from 05/08/2009 to 05/22/2009 | 33

- THEFT FROM VEHICLE** 21 May 2009
10800 BLOCK S DE ANZA BLVD
Distance: 8.54 miles
Identifier: 0091410444
Time: 18:14:24
Call Type: 480VEH
Description: VEHICLE BURGLARY
Final Disposition: R
Data provided by: Santa Clara County Sheriff's Office
Send to Friend
- THEFT** 21 May 2009
100 BLOCK W WEDDING Street,
Distance: 2.69 miles
Identifier: 0091410311
Time: 14:18:07
Call Type: 488
Description: PETTY THEFT
Final Disposition: N
Data provided by: Santa Clara County Sheriff's Office
Send to Friend
- BREAKING & ENTERING** 21 May 2009

Give your citizens the information they need to protect themselves and prevent crime.



- The largest crime-mapping network in North America, built for transparency and community outreach
- User-friendly, Google Maps navigation
- Access data from any computer with an internet connection
- Up-to-date, accurate, and agency controlled
- Ad-free, spam free
- Free access and email alerts for citizens
- Quick, easy installation
- No new software, no new infrastructure, no maintenance costs, no expensive updates

FOR MORE INFORMATION

888.888.CRIME
www.CrimeReports.com

FEATURES

Sort
Sort by crime, date, or distance from a chosen location

Search
Search for a city, town, zip code, or specific address

Crime Types
Choose which crimes you want to see on the map

Sex Offenders
Display official sex offender data

The screenshot shows the Neighborhood Watch software interface. At the top, there are navigation tabs for 'Home', 'Crime Reports', and 'Analytics'. Below this is a search bar with the text 'Enter location' and a 'Get report' button. A search history section shows examples like '695 Coleman Avenue, San Jose CA'. The main interface is divided into a left sidebar with a 'List View' of crimes, a central map area, and a right sidebar with a 'Crimes Legend'. The 'List View' shows three crime entries: 'THEFT 25 May 2009' at 'WILSHIRE BLVD & MELROSE AV', 'ASSAULT 25 May 2009' at 'E SANTA CLARA Street, & N 10TH ST', and 'THEFT 25 May 2009' at '2300 BLOCK MCKEE RD'. The map area shows a grid of streets with various colored markers representing different crime types. A popup window for an 'ASSAULT' incident is open, showing details for a crime on '16 May 2009' at 'N 16TH Street, & E Street, JOHN ST'. The 'Crimes Legend' on the right lists 16 crime types with corresponding icons: Assault (A), Breaking & Entering (B), Homicide (H), Other (O), Proactive Policing (PP), Quality of Life (Q), Reg. Sex Offender (RS), Robbery (Violent) (R), Sex Offense (S), Theft (T), Traffic (Truck icon), Theft from Vehicle (TV), Vehicle Recovery (VR), Theft of Vehicle (V), and Property Crime (P).

List View
A list of all crimes shown on the map

Date Range
Specify a date range or click Calendar to set a custom date range

Details
Click an incident marker to see details for that crime

Areas
Highlight specific neighborhoods

The screenshot shows the 'Analytics' section of the software. It features three data visualizations: a horizontal bar chart titled 'Number of Crimes' showing counts for various crime types, a pie chart titled 'Crimes as a Percentage of Total Crimes' showing the relative proportion of each crime type, and a line graph titled 'Crime Over Time' showing trends from 2009-01-01 to 2009-07-23. The line graph plots multiple crime types over time, showing fluctuations in their occurrence. The interface includes navigation buttons like 'Full Size Image' and 'Print' for each chart.

Analytics
These simple analytics give meaning to the raw data presented in the map. Each chart is printable and customizable by crime type and date range. These visualizations are an effective tool for Neighborhood Watch and City Council meetings to allocate resources, set goals, and measure progress.

PRICING

Up to 50K citizens \$99/month
Over 50K citizens \$199/month
For universities \$49/month